

PIANO TERRA

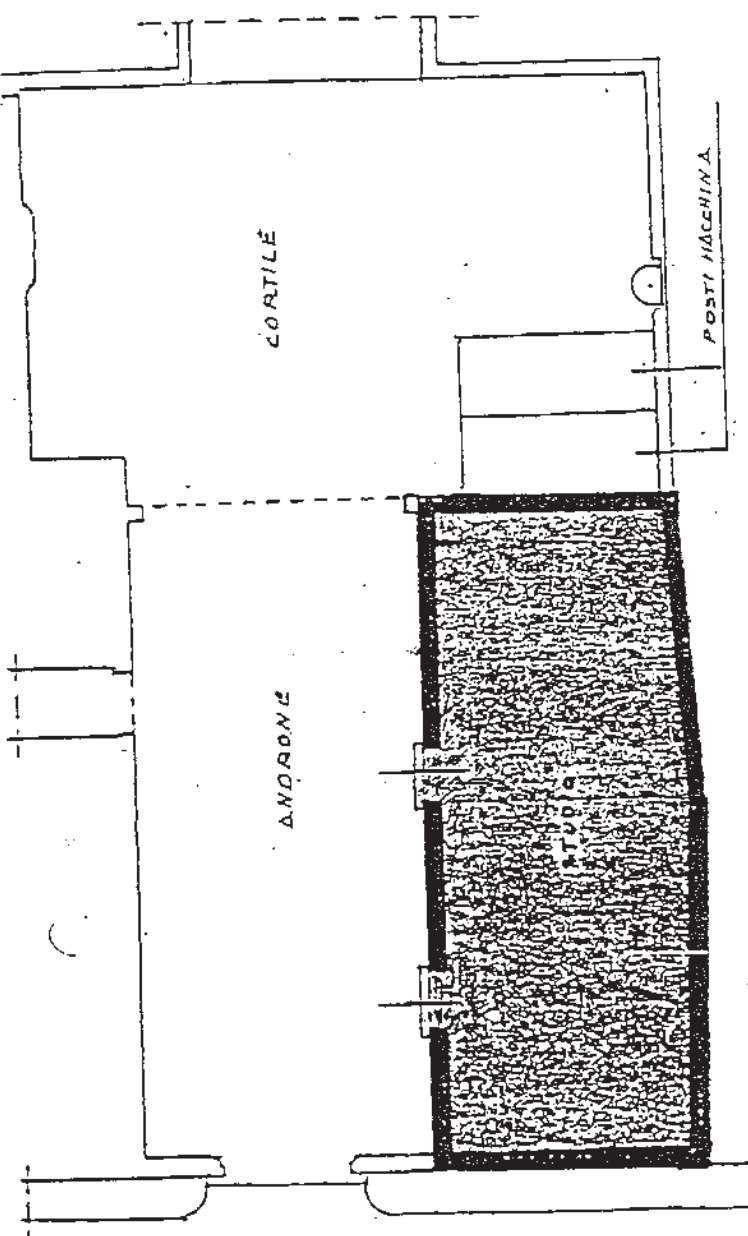
POSTI MACCHINA

MQ = 22.50

ANDRONI

MQ = 122.50 - 6%

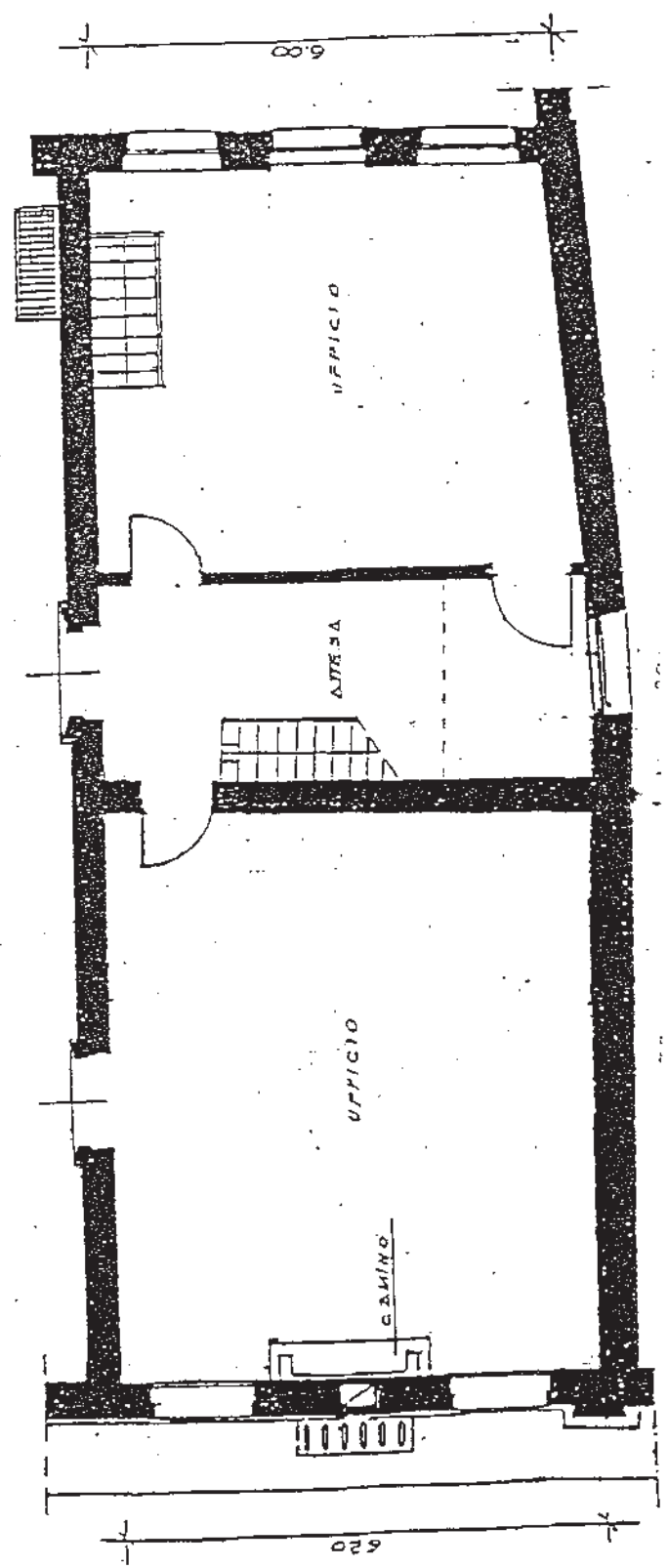
MQ = 7.35



PIAZZETTA
D. STEFANO

PIANO TERRA

UFFICI MQ = 12



PIANO SEMINTERRATO

UFFICIO - V.A.

NO. 33.00

ARCHIVIO - A/R

NO. 49.50

SOPRALCO

NO. 15.85

TOTALE : NO. 275

